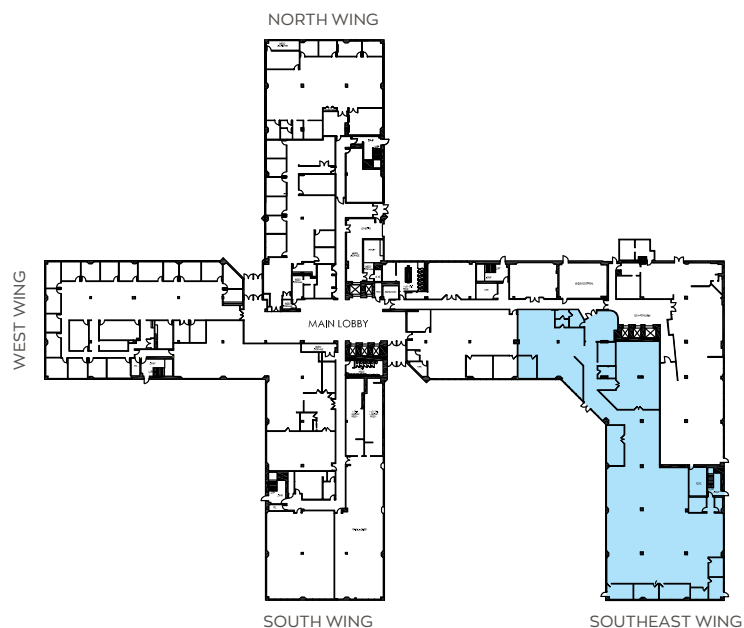


3 THREE EXECUTIVE

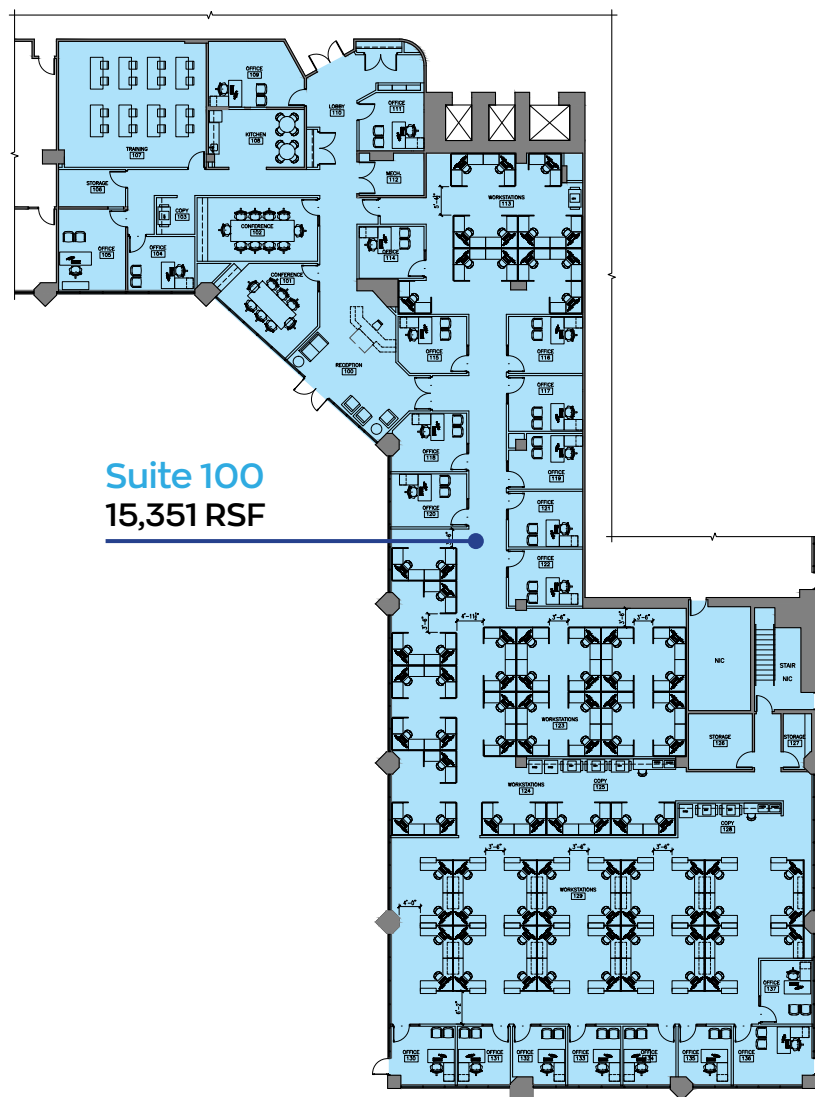
Suite 100
1st Floor
15,351 SF



Location Key



Suite 100
15,351 RSF



Rick Widerman
+1 856 324 5301
rick.widerman@jll.com

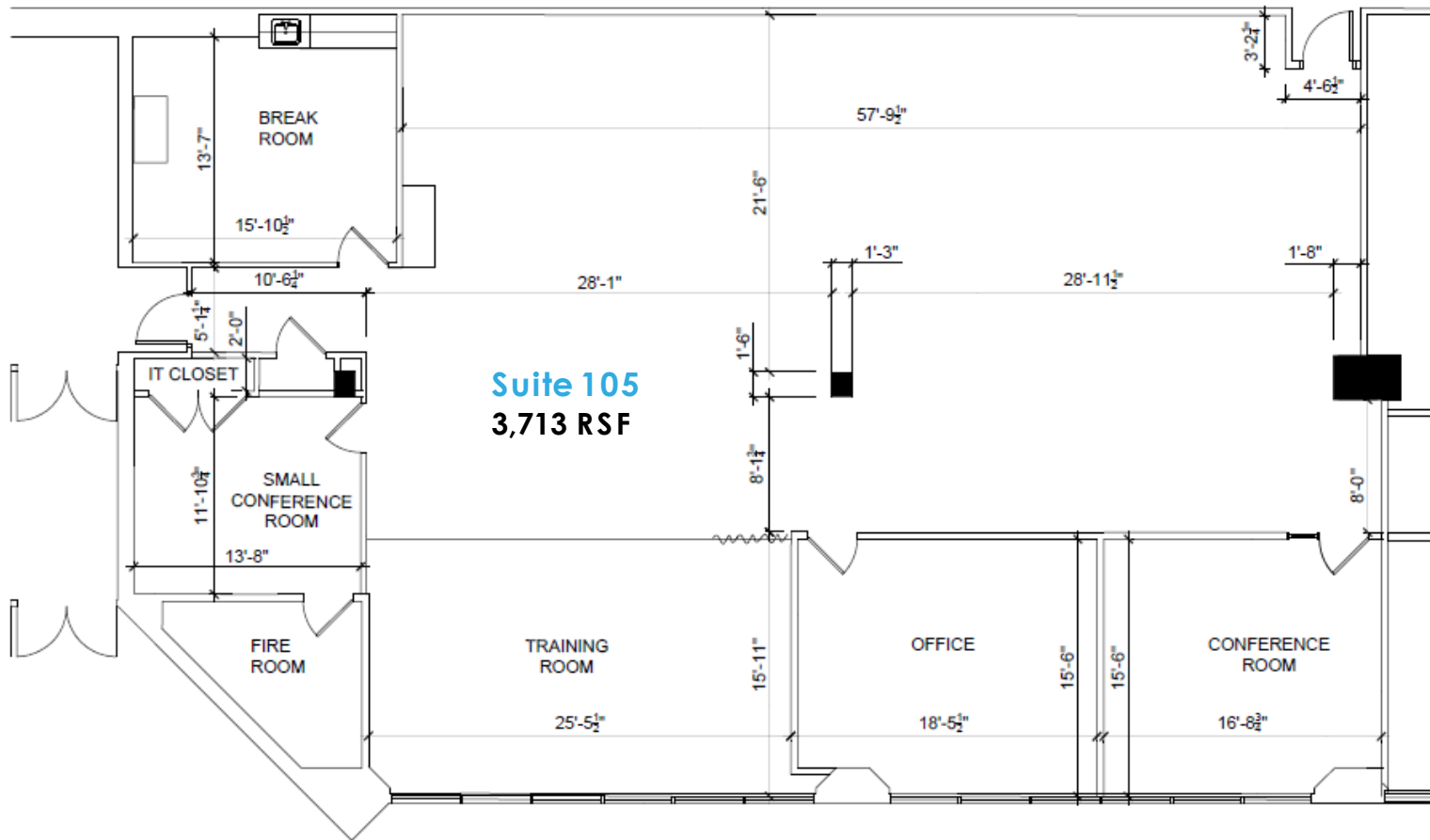
Dan Close
+1 856 324 5306
dan.close@jll.com

Jones Lang LaSalle Americas, Inc.
220 Lake Drive East, Suite 102
Cherry Hill, NJ 08002



Although information has been obtained from sources deemed reliable, neither Owner nor JLL makes any guarantees, warranties or representations, express or implied, as to the completeness or accuracy as to the information contained herein. Any projections, opinions, assumptions or estimates used are for example only. There may be differences between projected and actual results, and those differences may be material. The Property may be withdrawn without notice. Neither Owner nor JLL accepts any liability for any loss or damage suffered by any party resulting from reliance on this information. If the recipient of this information has signed a confidentiality agreement regarding this matter, this information is subject to the terms of that agreement. ©2023. Jones Lang LaSalle Americas, Inc. All rights reserved.

Suite 105
Floor Number 1
3,713 RSF



Rick Widerman
+1 856 324 5301
rick.widerman@jll.com

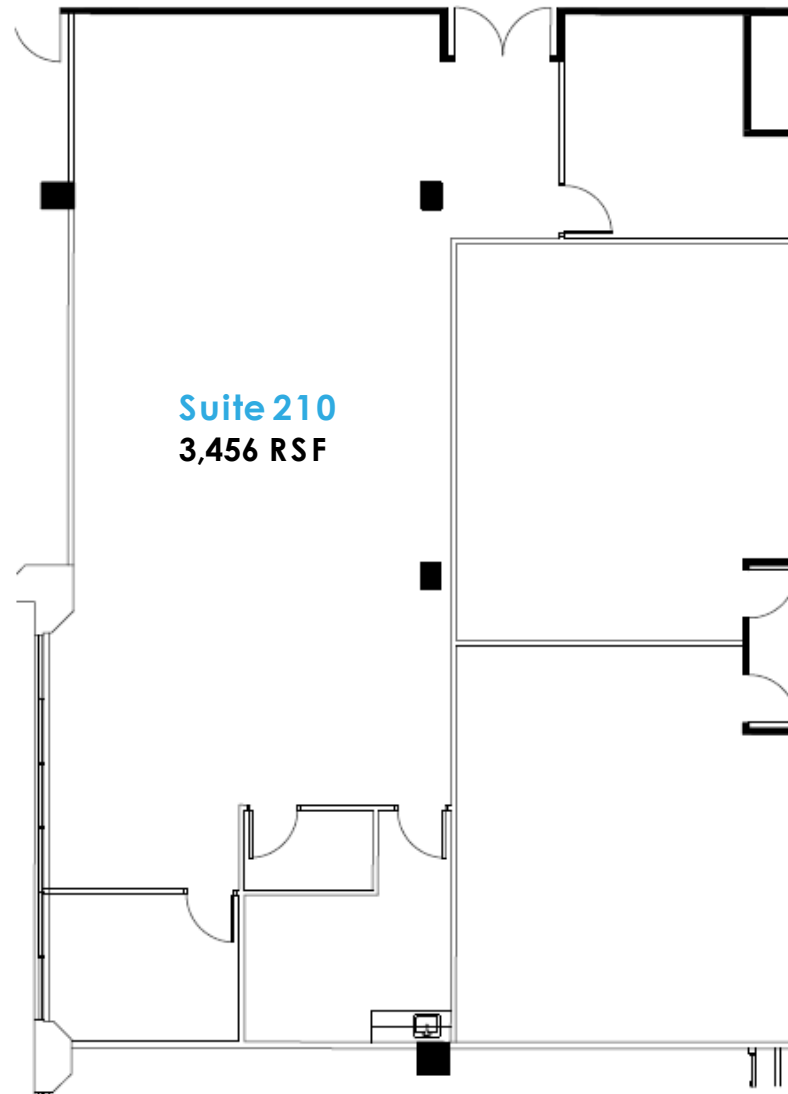
Dan Close
+1 856 324 5306
dan.close@jll.com

Jones Lang LaSalle Brokerage, Inc.
220 Lake Drive East, Suite 102
Cherry Hill, NJ 08002





Suite 210
Floor Number 2
3,456 RSF



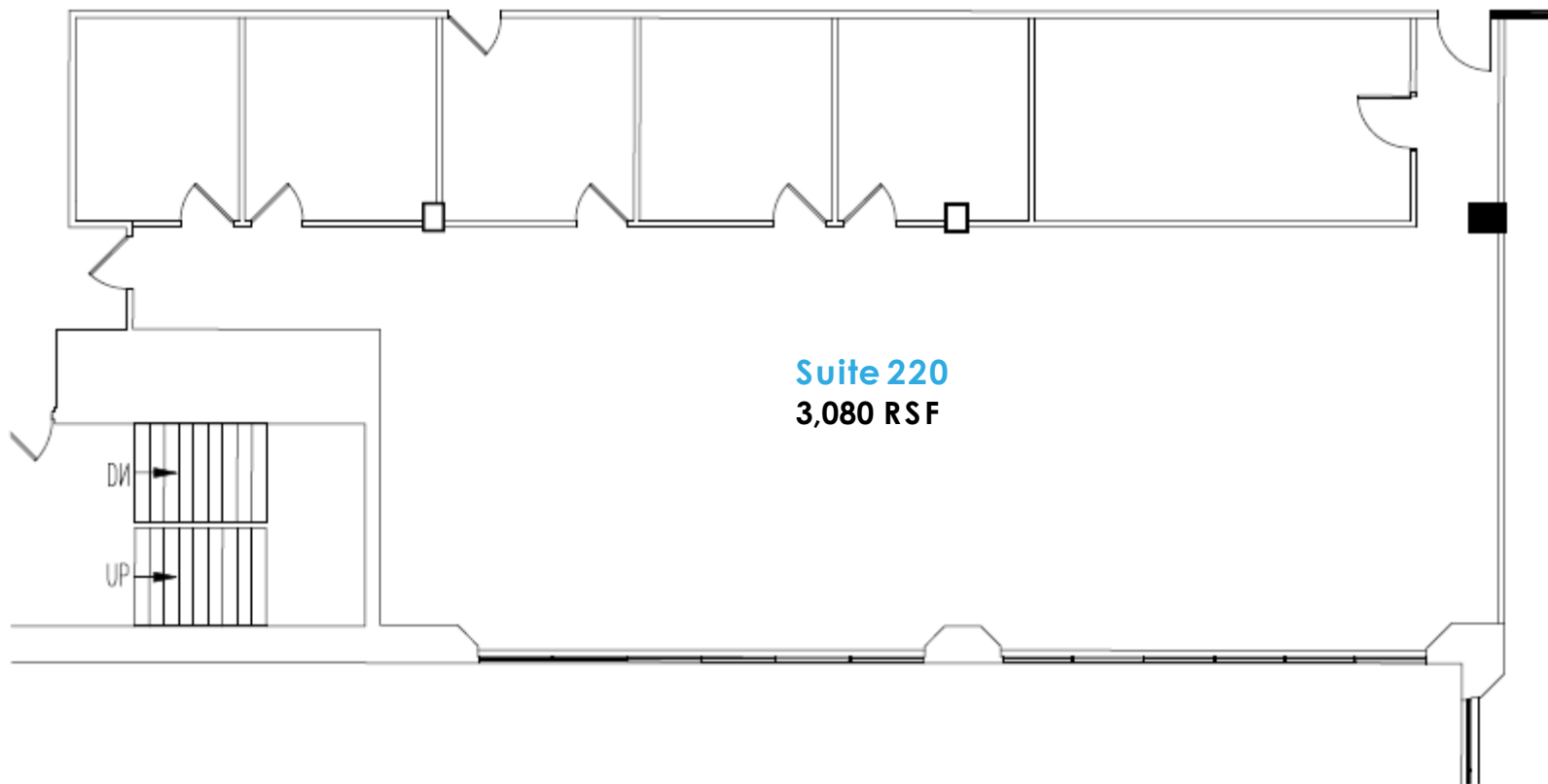
Rick Widerman
+1856 324 5301
rick.widerman@jll.com

Dan Close
+1856 324 5306
dan.close@jll.com

Jones Lang LaSalle Brokerage, Inc.
220 Lake Drive East, Suite 102
Cherry Hill, NJ 08002



Although information has been obtained from sources deemed reliable, neither Owner nor JLL makes any guarantees, warranties or representations, express or implied, as to the completeness or accuracy as to the information contained herein. Any projections, opinions, assumptions or estimates used are for example only. There may be differences between projected and actual results, and those differences may be material. The Property may be withdrawn without notice. Neither Owner nor JLL accepts any liability for any loss or damage suffered by any party resulting from reliance on this information. If the recipient of this information has signed a confidentiality agreement regarding this matter, this information is subject to the terms of that agreement. ©2023. Jones Lang LaSalle Americas, Inc. All rights reserved.

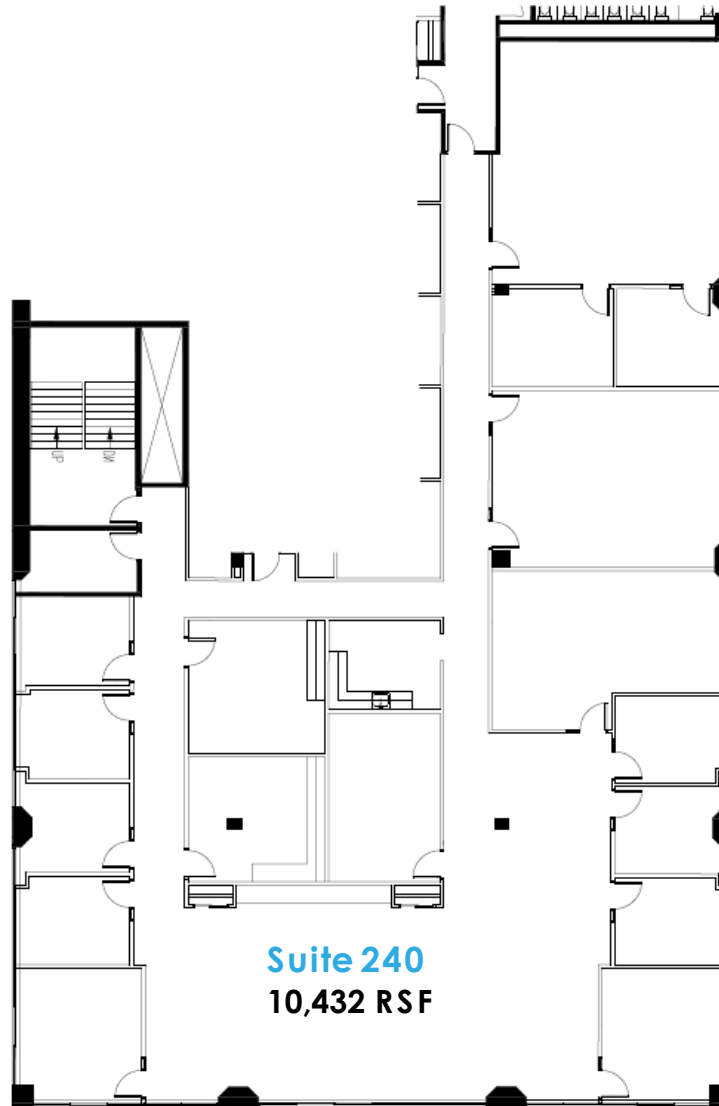


Rick Widerman
+1856 324 5301
rick.widerman@jll.com

Dan Close
+1856 324 5306
dan.close@jll.com

Jones Lang LaSalle Brokerage, Inc.
220 Lake Drive East, Suite 102
Cherry Hill, NJ 08002





Rick Widerman
+1856 324 5301
rick.widerman@jll.com

Dan Close
+1856 324 5306
dan.close@jll.com

Jones Lang LaSalle Brokerage, Inc.
220 Lake Drive East, Suite 102
Cherry Hill, NJ 08002

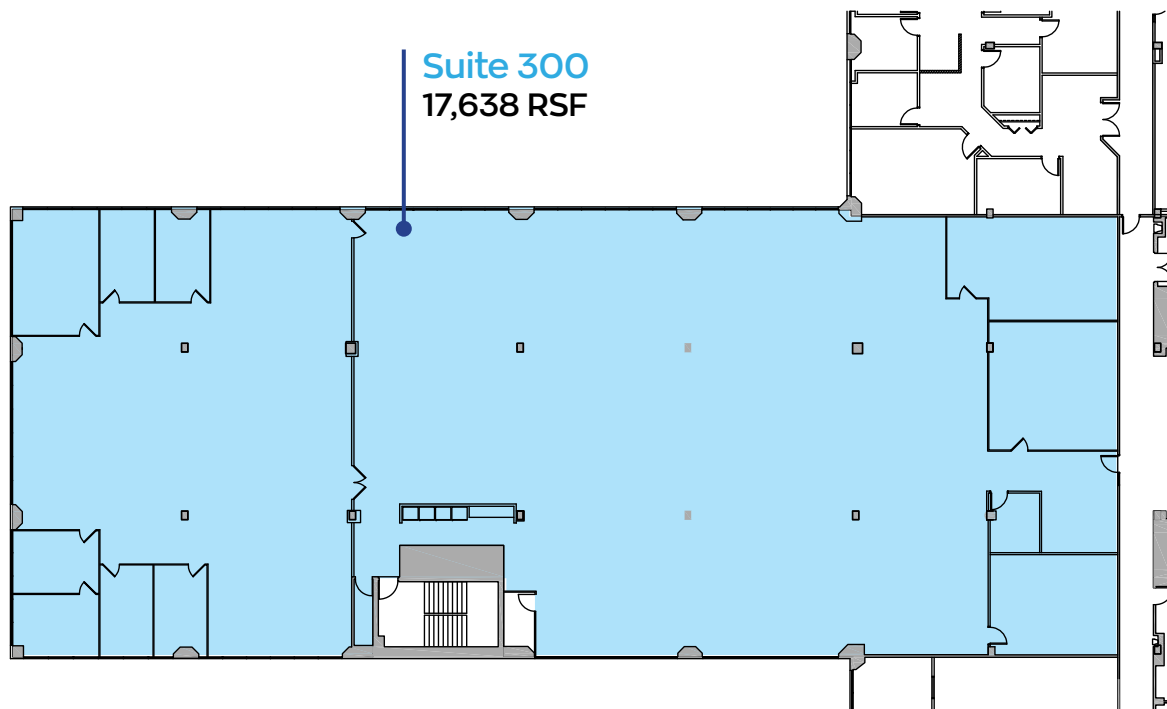
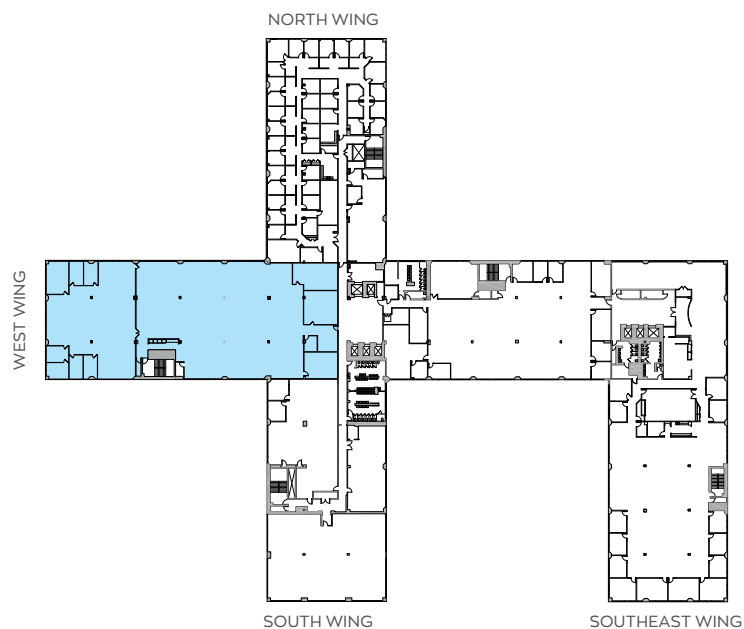


3 THREE EXECUTIVE

Suite 300
3rd Floor
17,638 RSF



Location Key



Rick Widerman
+1 856 324 5301
rick.widerman@jll.com

Dan Close
+1 856 324 5306
dan.close@jll.com

Jones Lang LaSalle Americas, Inc.
220 Lake Drive East, Suite 102
Cherry Hill, NJ 08002



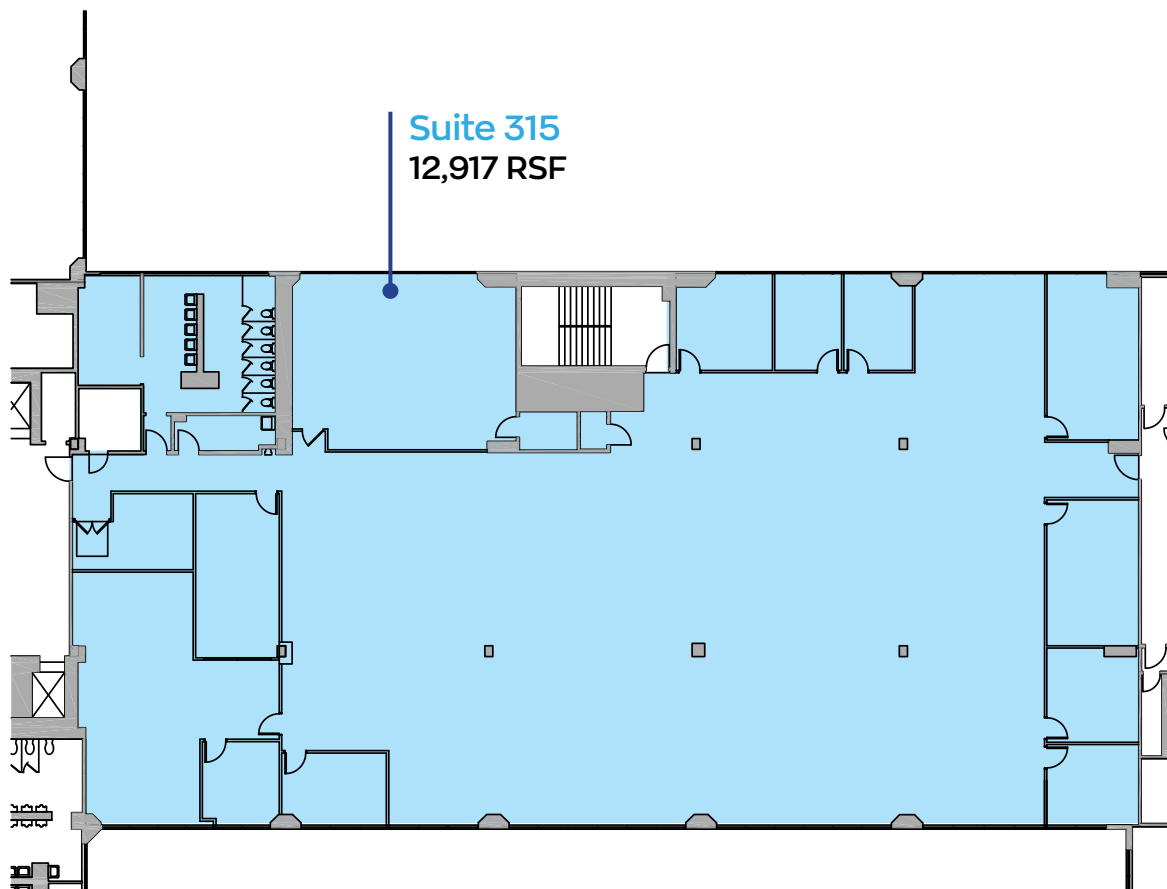
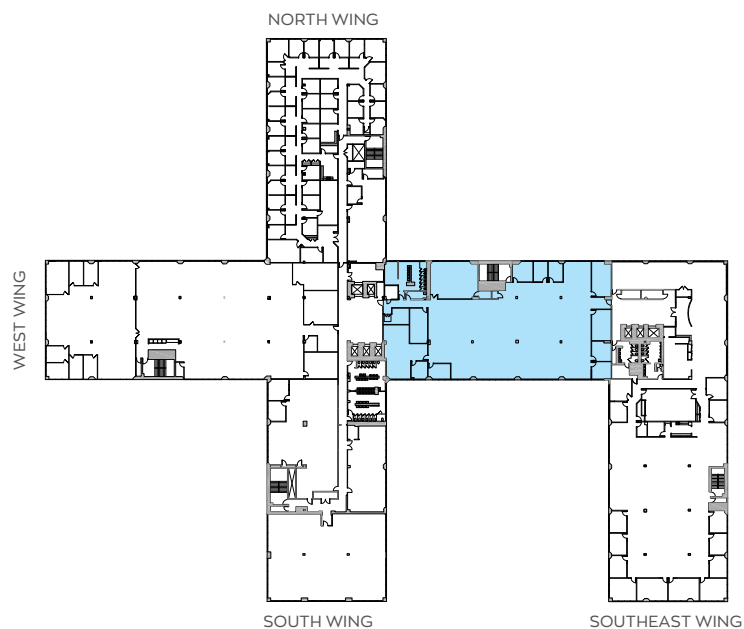
Although information has been obtained from sources deemed reliable, neither Owner nor JLL makes any guarantees, warranties or representations, express or implied, as to the completeness or accuracy as to the information contained herein. Any projections, opinions, assumptions or estimates used are for example only. There may be differences between projected and actual results, and those differences may be material. The Property may be withdrawn without notice. Neither Owner nor JLL accepts any liability for any loss or damage suffered by any party resulting from reliance on this information. If the recipient of this information has signed a confidentiality agreement regarding this matter, this information is subject to the terms of that agreement. ©2023. Jones Lang LaSalle Americas, Inc. All rights reserved.

3 THREE EXECUTIVE

Suite 315
3rd Floor
12,917 RSF



Location Key



Rick Widerman
+1 856 324 5301
rick.widerman@jll.com

Dan Close
+1 856 324 5306
dan.close@jll.com

Jones Lang LaSalle Americas, Inc.
220 Lake Drive East, Suite 102
Cherry Hill, NJ 08002



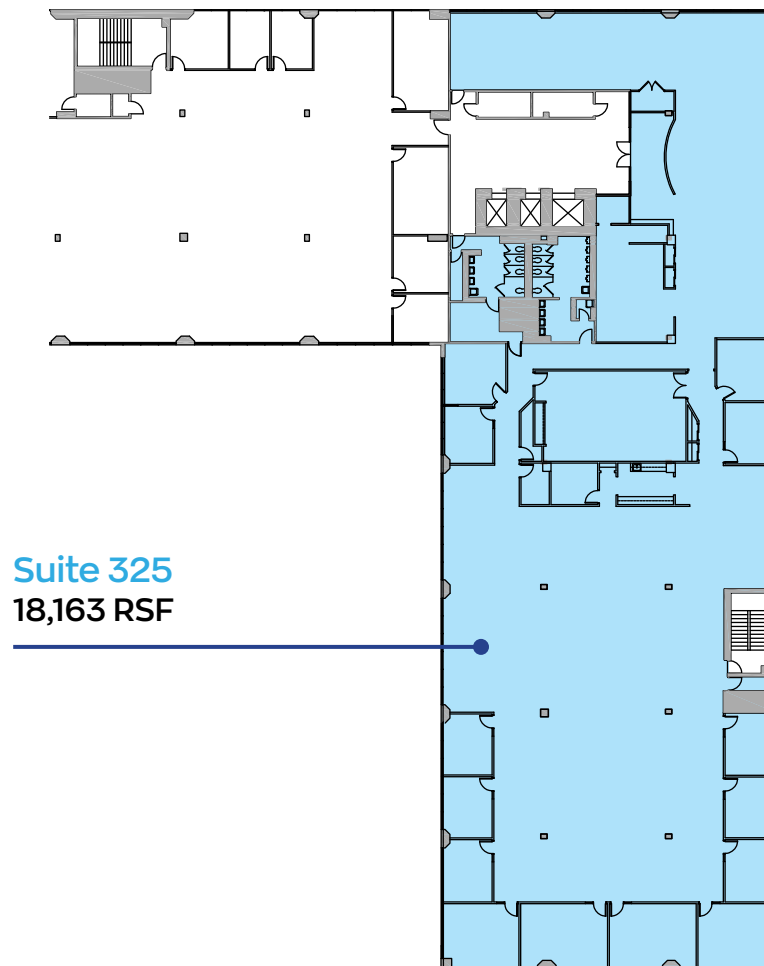
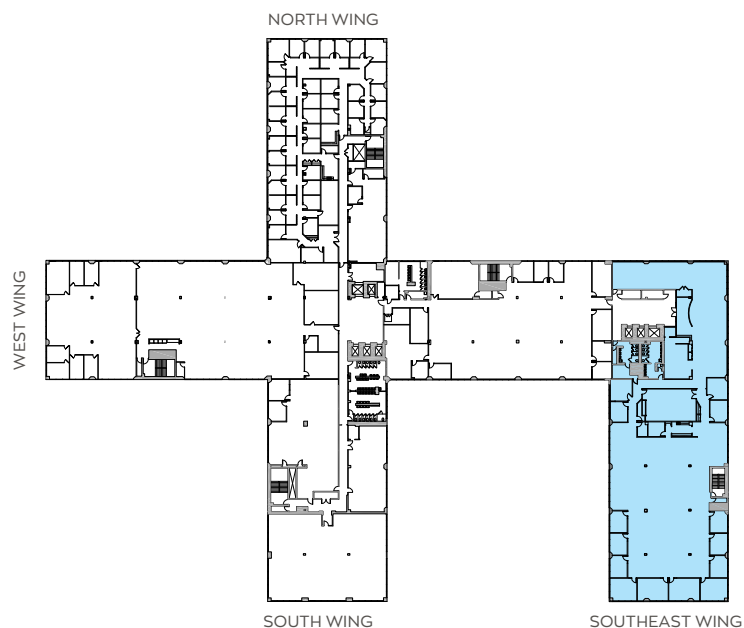
Although information has been obtained from sources deemed reliable, neither Owner nor JLL makes any guarantees, warranties or representations, express or implied, as to the completeness or accuracy as to the information contained herein. Any projections, opinions, assumptions or estimates used are for example only. There may be differences between projected and actual results, and those differences may be material. The Property may be withdrawn without notice. Neither Owner nor JLL accepts any liability for any loss or damage suffered by any party resulting from reliance on this information. If the recipient of this information has signed a confidentiality agreement regarding this matter, this information is subject to the terms of that agreement. ©2023. Jones Lang LaSalle Americas, Inc. All rights reserved.

3 THREE EXECUTIVE

Suite 325
3rd Floor
18,163 RSF



Location Key



Rick Widerman
+1 856 324 5301
rick.widerman@jll.com

Dan Close
+1 856 324 5306
dan.close@jll.com

Jones Lang LaSalle Americas, Inc.
220 Lake Drive East, Suite 102
Cherry Hill, NJ 08002

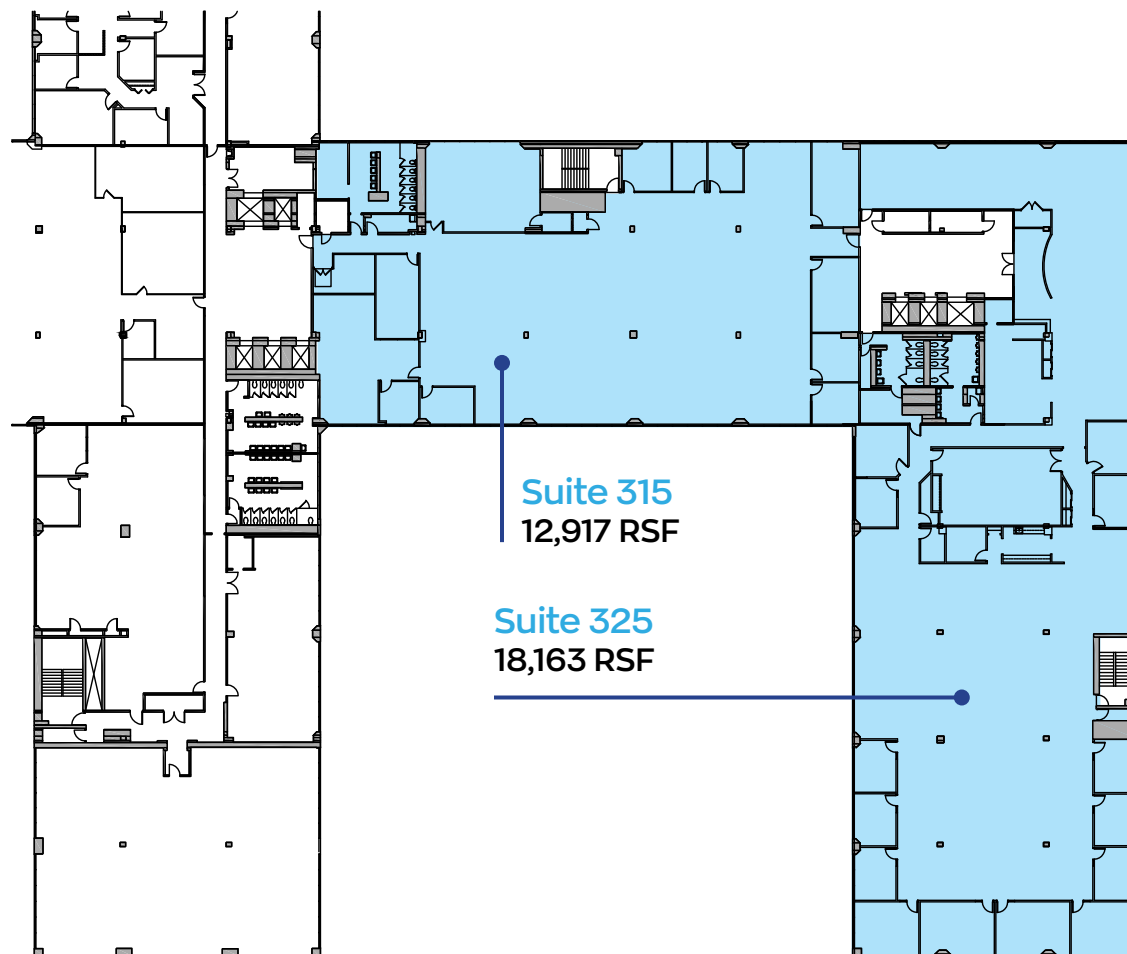
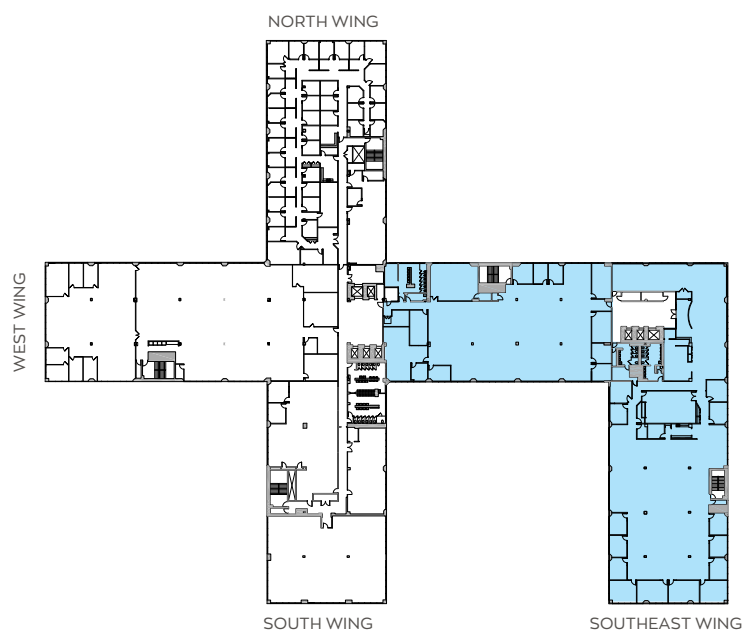


3 THREE EXECUTIVE

Suites 315 & 325
3rd Floor
31,080 RSF



Location Key



Rick Widerman
+1 856 324 5301
rick.widerman@jll.com

Dan Close
+1 856 324 5306
dan.close@jll.com

Jones Lang LaSalle Americas, Inc.
220 Lake Drive East, Suite 102
Cherry Hill, NJ 08002



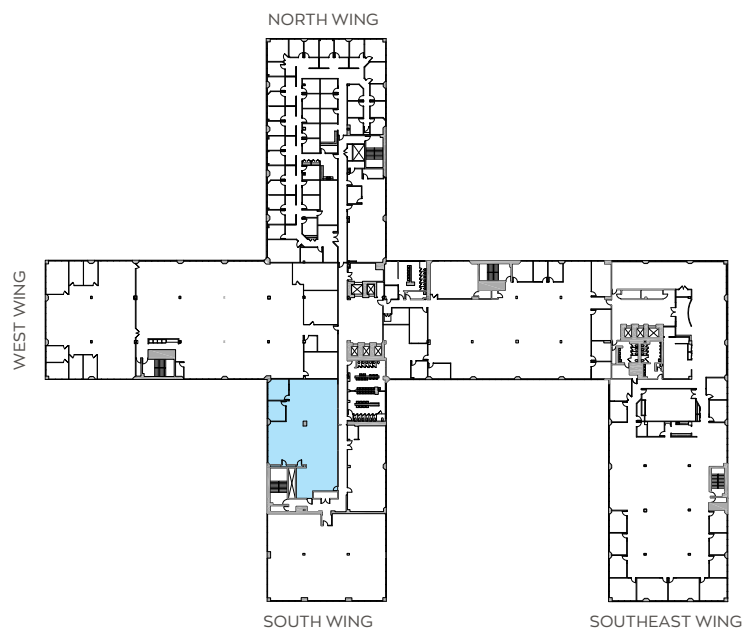
Although information has been obtained from sources deemed reliable, neither Owner nor JLL makes any guarantees, warranties or representations, express or implied, as to the completeness or accuracy as to the information contained herein. Any projections, opinions, assumptions or estimates used are for example only. There may be differences between projected and actual results, and those differences may be material. The Property may be withdrawn without notice. Neither Owner nor JLL accepts any liability for any loss or damage suffered by any party resulting from reliance on this information. If the recipient of this information has signed a confidentiality agreement regarding this matter, this information is subject to the terms of that agreement. ©2023. Jones Lang LaSalle Americas, Inc. All rights reserved.

3 THREE EXECUTIVE

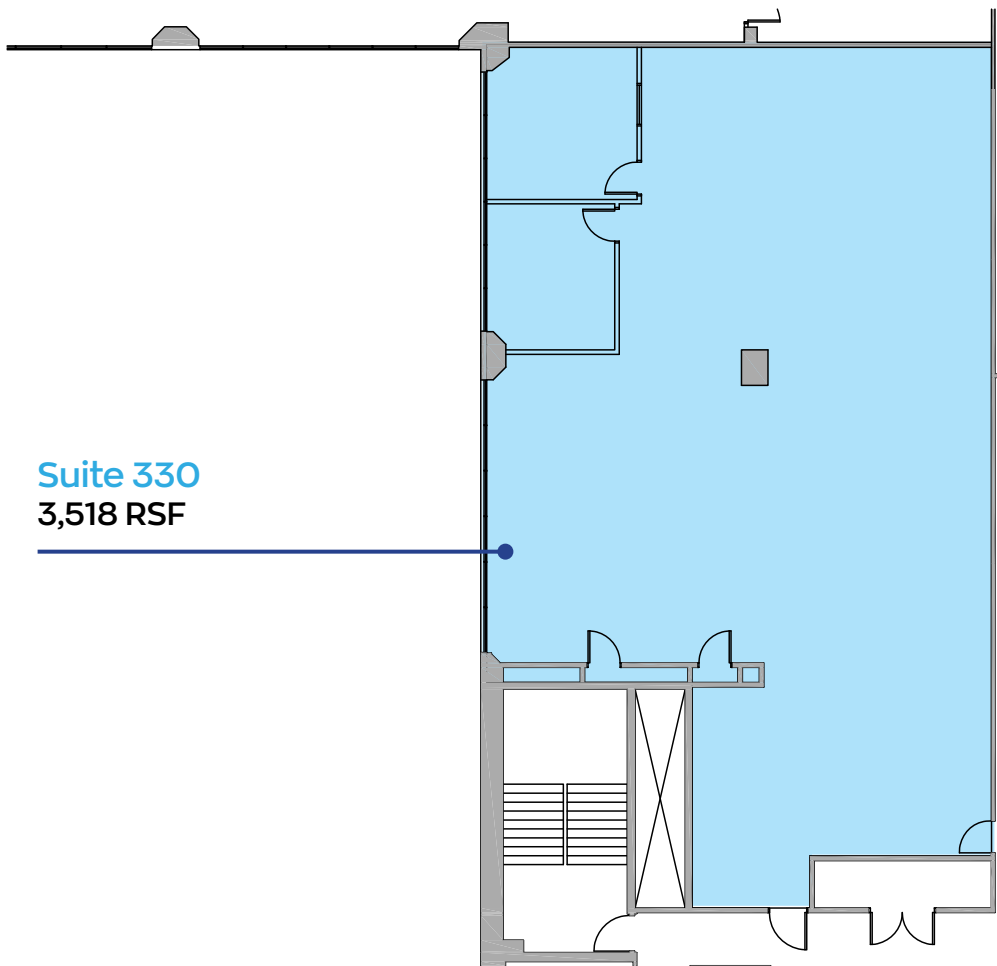
Suite 330
3rd Floor
3,518 RSF



Location Key



Suite 330
3,518 RSF



Rick Widerman
+1 856 324 5301
rick.widerman@jll.com

Dan Close
+1 856 324 5306
dan.close@jll.com

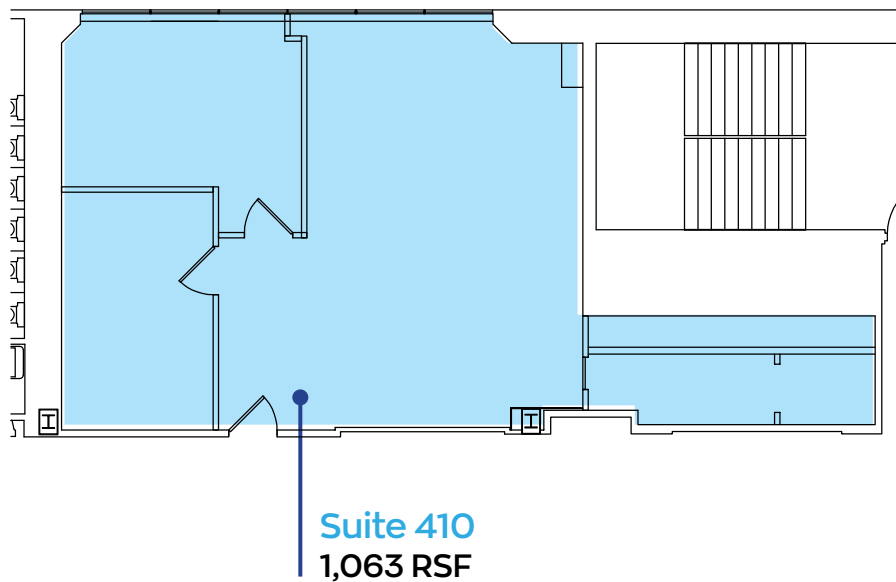
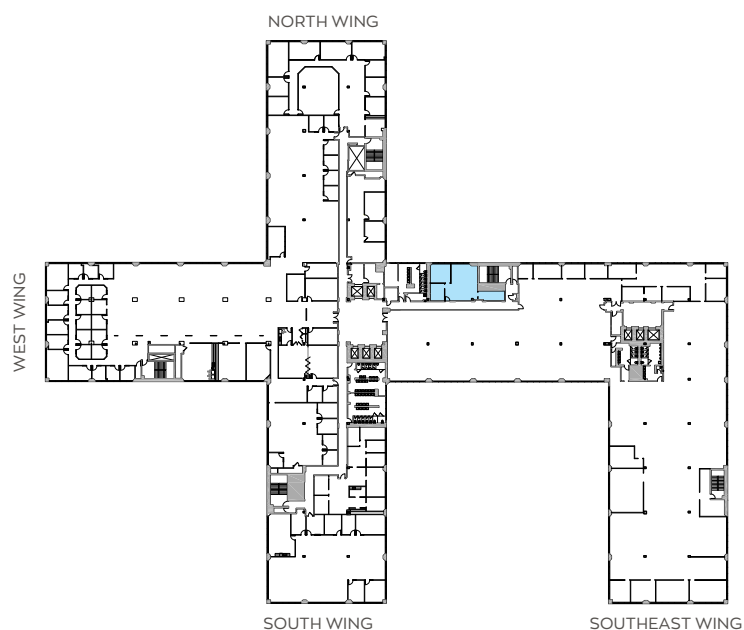
Jones Lang LaSalle Americas, Inc.
220 Lake Drive East, Suite 102
Cherry Hill, NJ 08002



Although information has been obtained from sources deemed reliable, neither Owner nor JLL makes any guarantees, warranties or representations, express or implied, as to the completeness or accuracy as to the information contained herein. Any projections, opinions, assumptions or estimates used are for example only. There may be differences between projected and actual results, and those differences may be material. The Property may be withdrawn without notice. Neither Owner nor JLL accepts any liability for any loss or damage suffered by any party resulting from reliance on this information. If the recipient of this information has signed a confidentiality agreement regarding this matter, this information is subject to the terms of that agreement. ©2023. Jones Lang LaSalle Americas, Inc. All rights reserved.



Location Key



Rick Widerman
+1 856 324 5301
rick.widerman@jll.com

Dan Close
+1 856 324 5306
dan.close@jll.com

Jones Lang LaSalle Americas, Inc.
220 Lake Drive East, Suite 102
Cherry Hill, NJ 08002

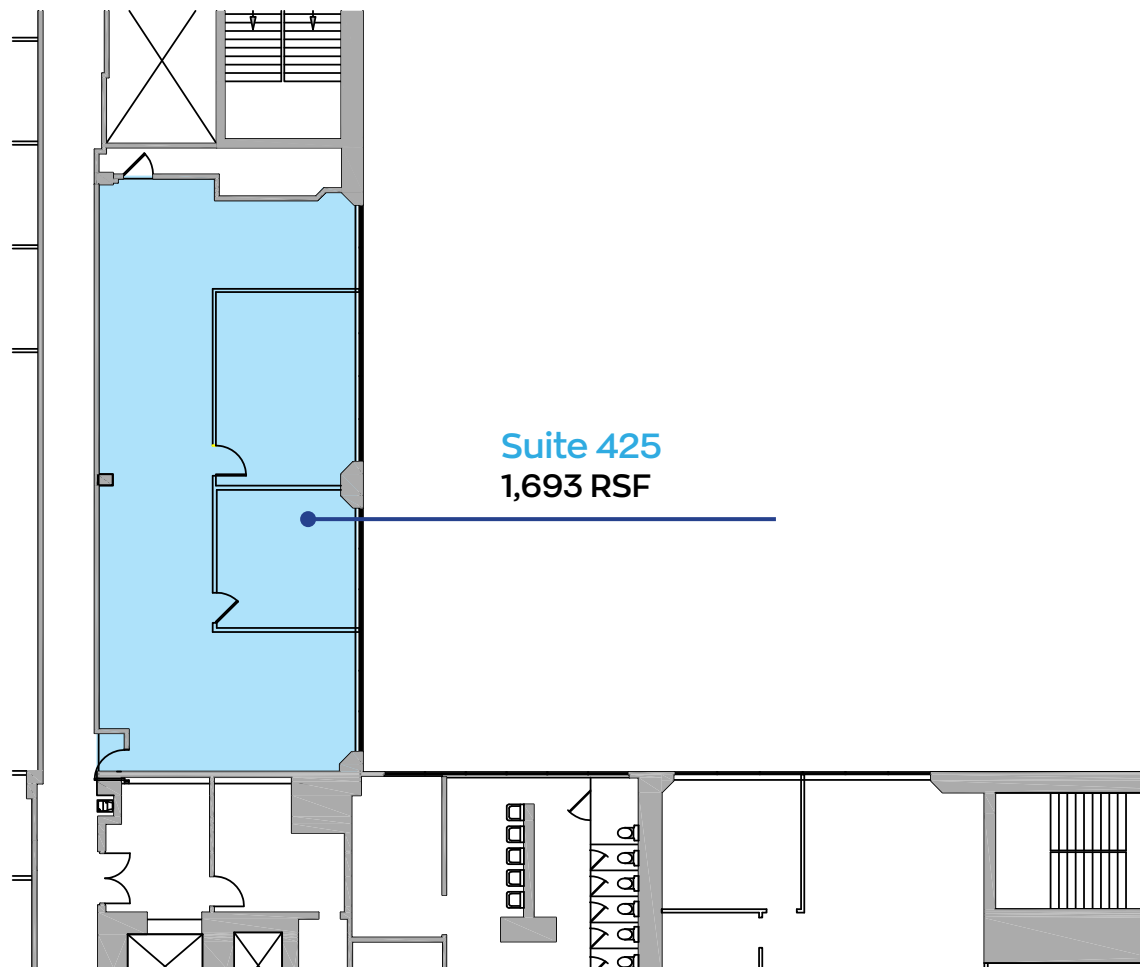
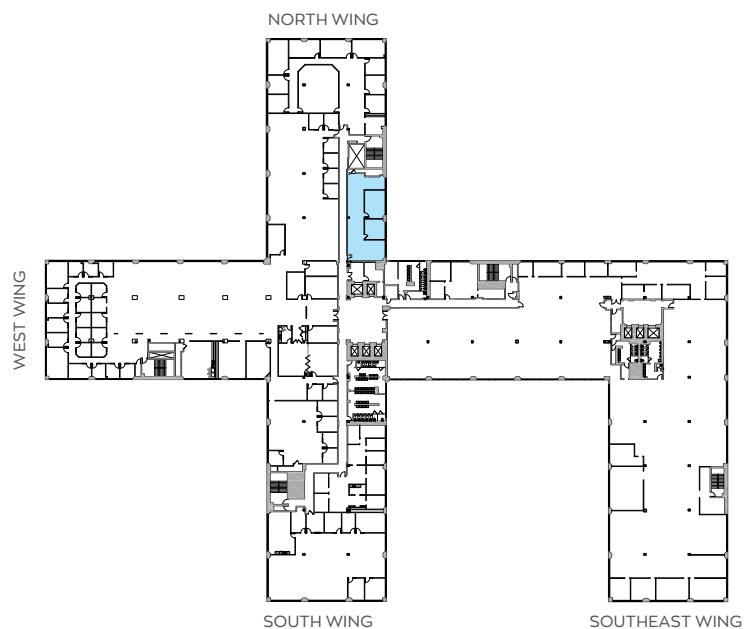


3 THREE EXECUTIVE

Suite 425
4th Floor
1,693 RSF



Location Key



Rick Widerman
+1 856 324 5301
rick.widerman@jll.com

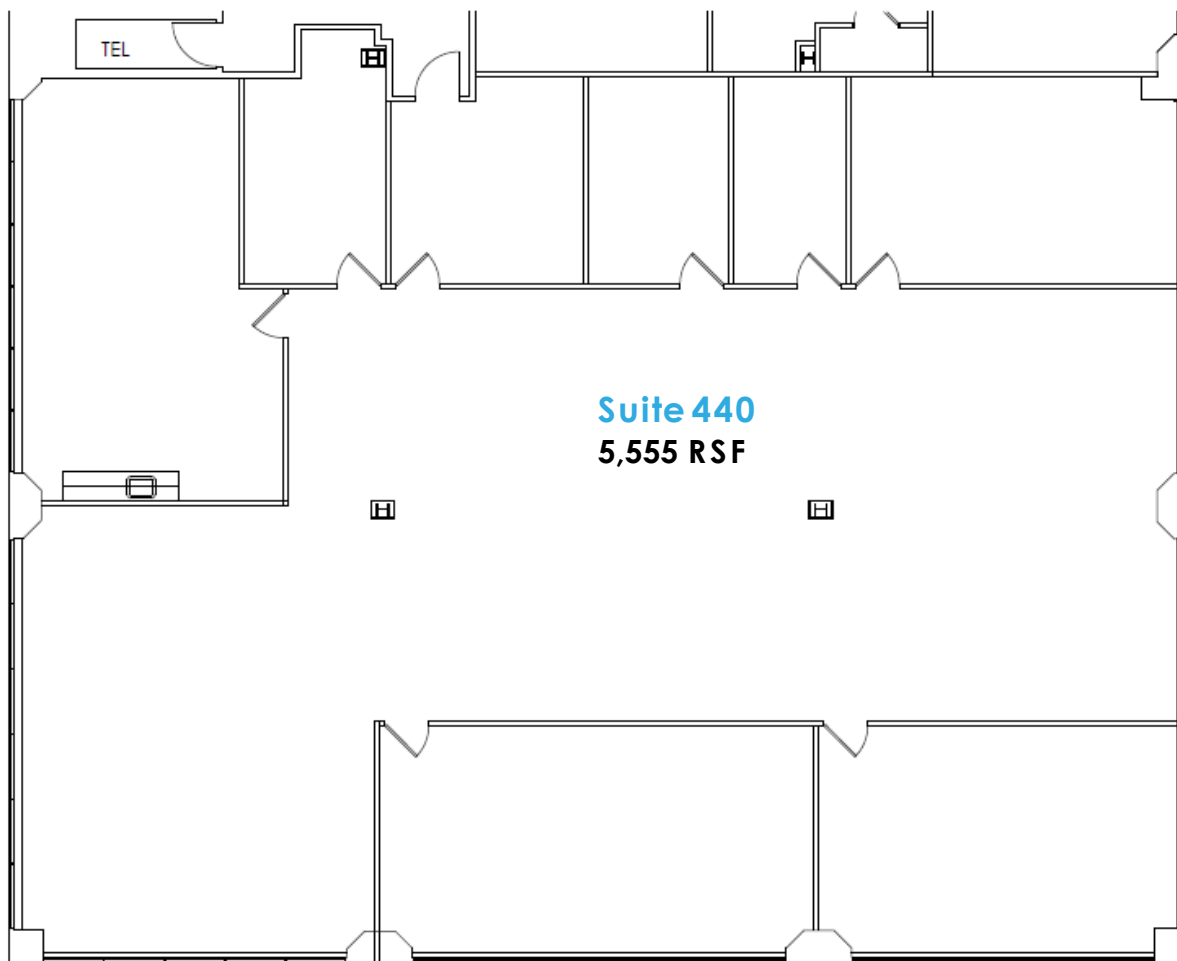
Dan Close
+1 856 324 5306
dan.close@jll.com

Jones Lang LaSalle Americas, Inc.
220 Lake Drive East, Suite 102
Cherry Hill, NJ 08002



Although information has been obtained from sources deemed reliable, neither Owner nor JLL makes any guarantees, warranties or representations, express or implied, as to the completeness or accuracy as to the information contained herein. Any projections, opinions, assumptions or estimates used are for example only. There may be differences between projected and actual results, and those differences may be material. The Property may be withdrawn without notice. Neither Owner nor JLL accepts any liability for any loss or damage suffered by any party resulting from reliance on this information. If the recipient of this information has signed a confidentiality agreement regarding this matter, this information is subject to the terms of that agreement. ©2023. Jones Lang LaSalle Americas, Inc. All rights reserved.

Suite 440
Floor Number 4
5,555 RSF



Rick Widerman
+1856 324 5301
rick.widerman@jll.com

Dan Close
+1856 324 5306
dan.close@jll.com

Jones Lang LaSalle Brokerage, Inc.
220 Lake Drive East, Suite 102
Cherry Hill, NJ 08002

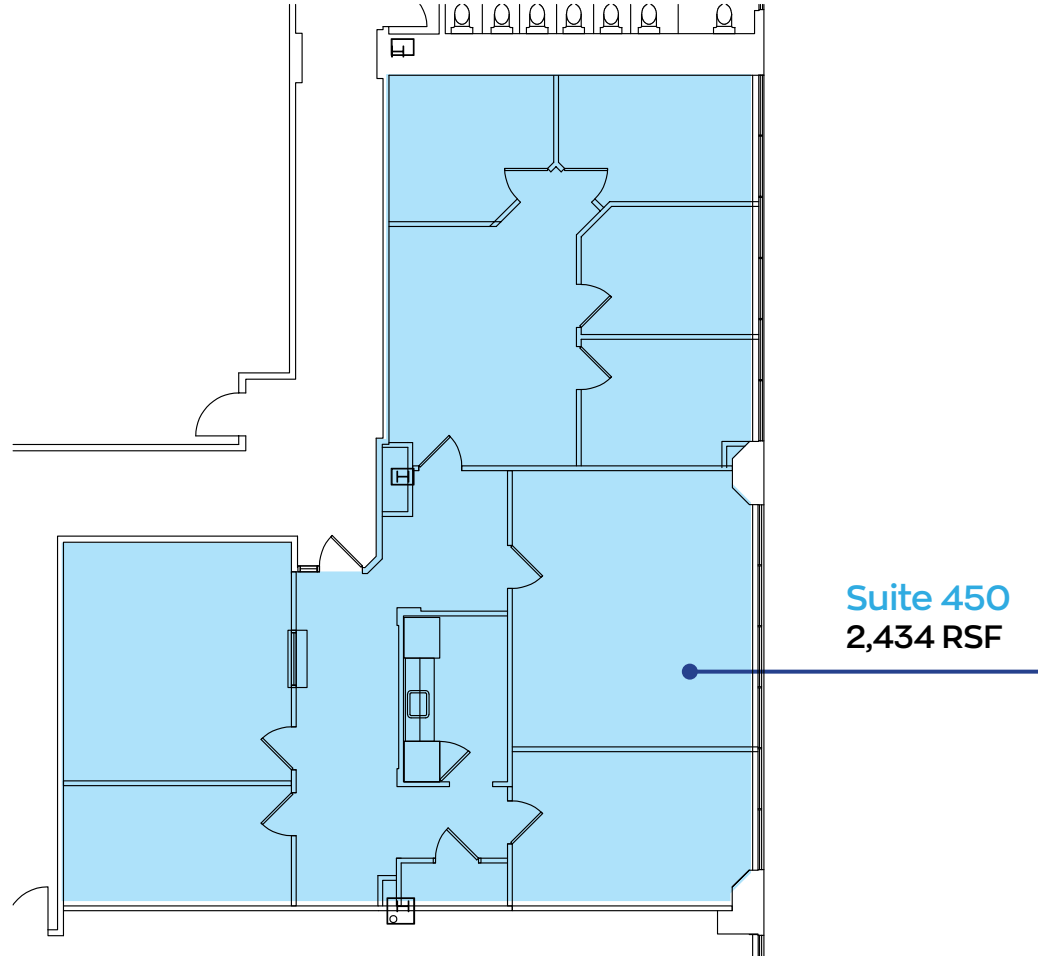
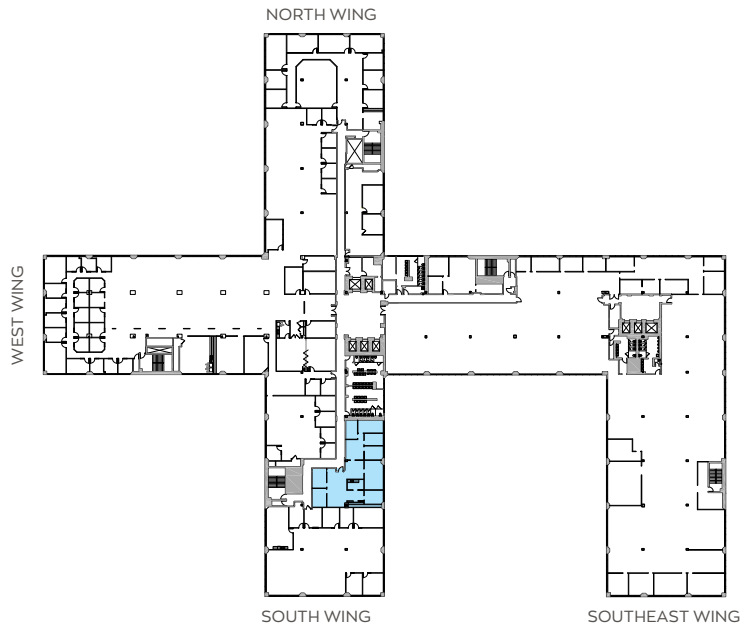


3 THREE EXECUTIVE

Suite 450
4th Floor
2,434 RSF



Location Key



Rick Widerman
+1 856 324 5301
rick.widerman@jll.com

Dan Close
+1 856 324 5306
dan.close@jll.com

Jones Lang LaSalle Americas, Inc.
220 Lake Drive East, Suite 102
Cherry Hill, NJ 08002



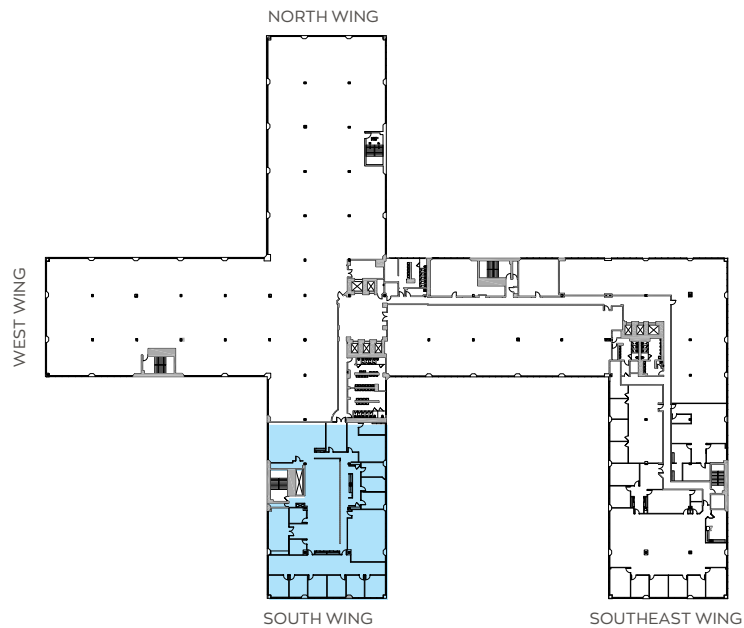
Although information has been obtained from sources deemed reliable, neither Owner nor JLL makes any guarantees, warranties or representations, express or implied, as to the completeness or accuracy as to the information contained herein. Any projections, opinions, assumptions or estimates used are for example only. There may be differences between projected and actual results, and those differences may be material. The Property may be withdrawn without notice. Neither Owner nor JLL accepts any liability for any loss or damage suffered by any party resulting from reliance on this information. If the recipient of this information has signed a confidentiality agreement regarding this matter, this information is subject to the terms of that agreement. ©2023. Jones Lang LaSalle Americas, Inc. All rights reserved.

3 THREE EXECUTIVE

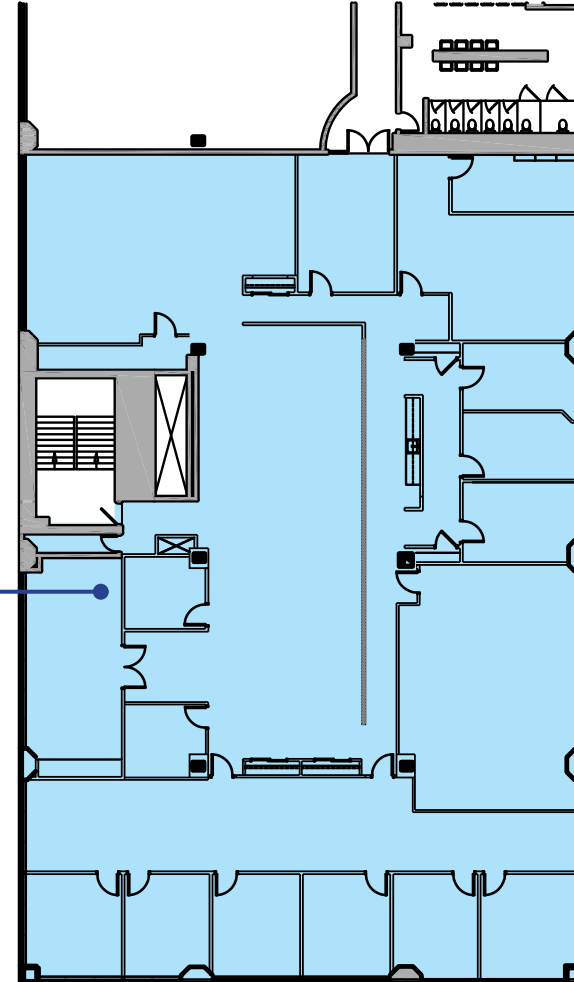
Suite 520
Floor Number
10,112 RSF



Location Key



Suite 520
10,112 RSF



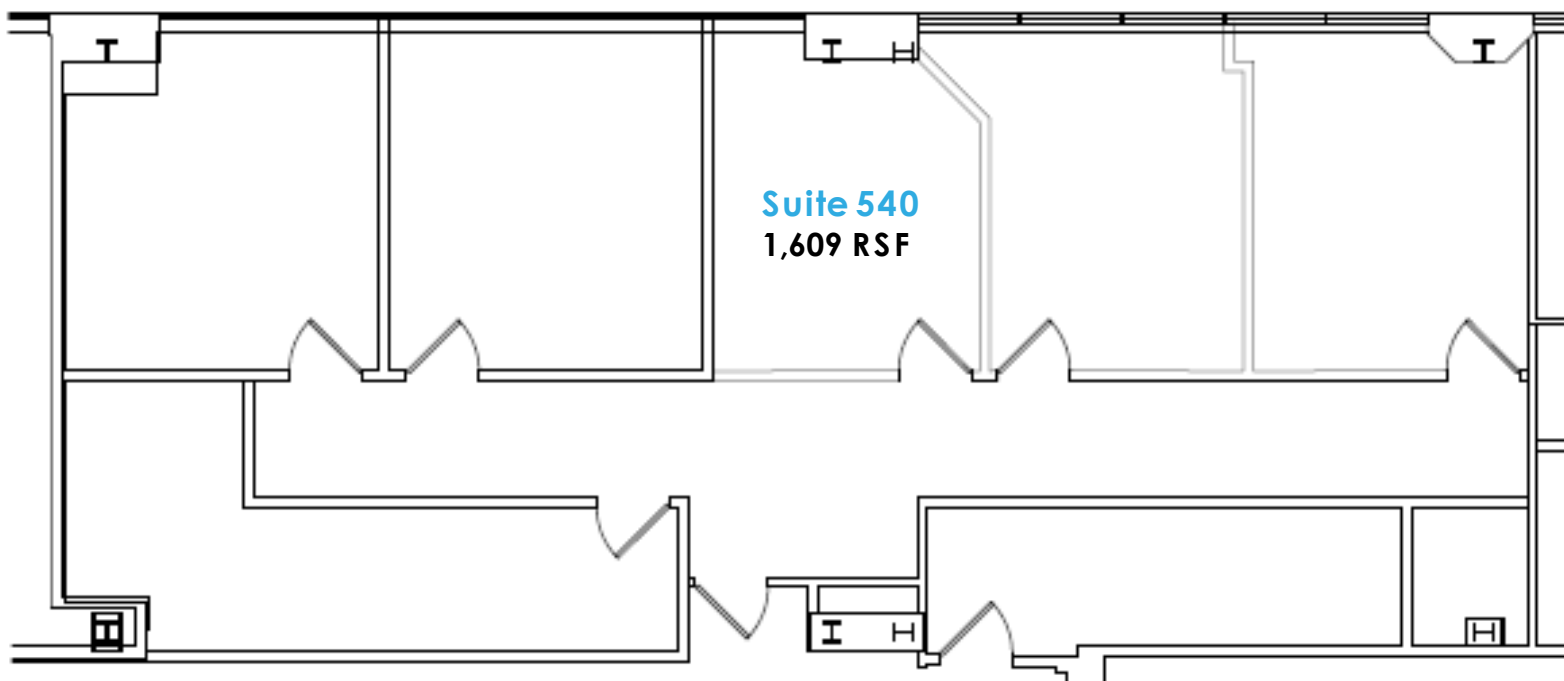
Rick Widerman
+1 856 324 5301
rick.widerman@jll.com

Dan Close
+1 856 324 5306
dan.close@jll.com

Jones Lang LaSalle Americas, Inc.
220 Lake Drive East, Suite 102
Cherry Hill, NJ 08002



Although information has been obtained from sources deemed reliable, neither Owner nor JLL makes any guarantees, warranties or representations, express or implied, as to the completeness or accuracy as to the information contained herein. Any projections, opinions, assumptions or estimates used are for example only. There may be differences between projected and actual results, and those differences may be material. The Property may be withdrawn without notice. Neither Owner nor JLL accepts any liability for any loss or damage suffered by any party resulting from reliance on this information. If the recipient of this information has signed a confidentiality agreement regarding this matter, this information is subject to the terms of that agreement. ©2023. Jones Lang LaSalle Americas, Inc. All rights reserved.



Rick Widerman
+1856 324 5301
rick.widerman@jll.com

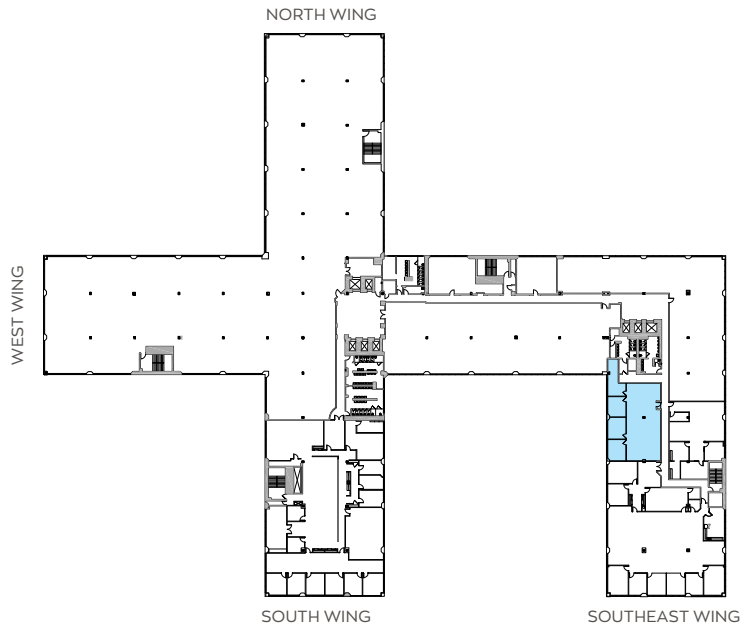
Dan Close
+1856 324 5306
dan.close@jll.com

Jones Lang LaSalle Brokerage, Inc.
220 Lake Drive East, Suite 102
Cherry Hill, NJ 08002

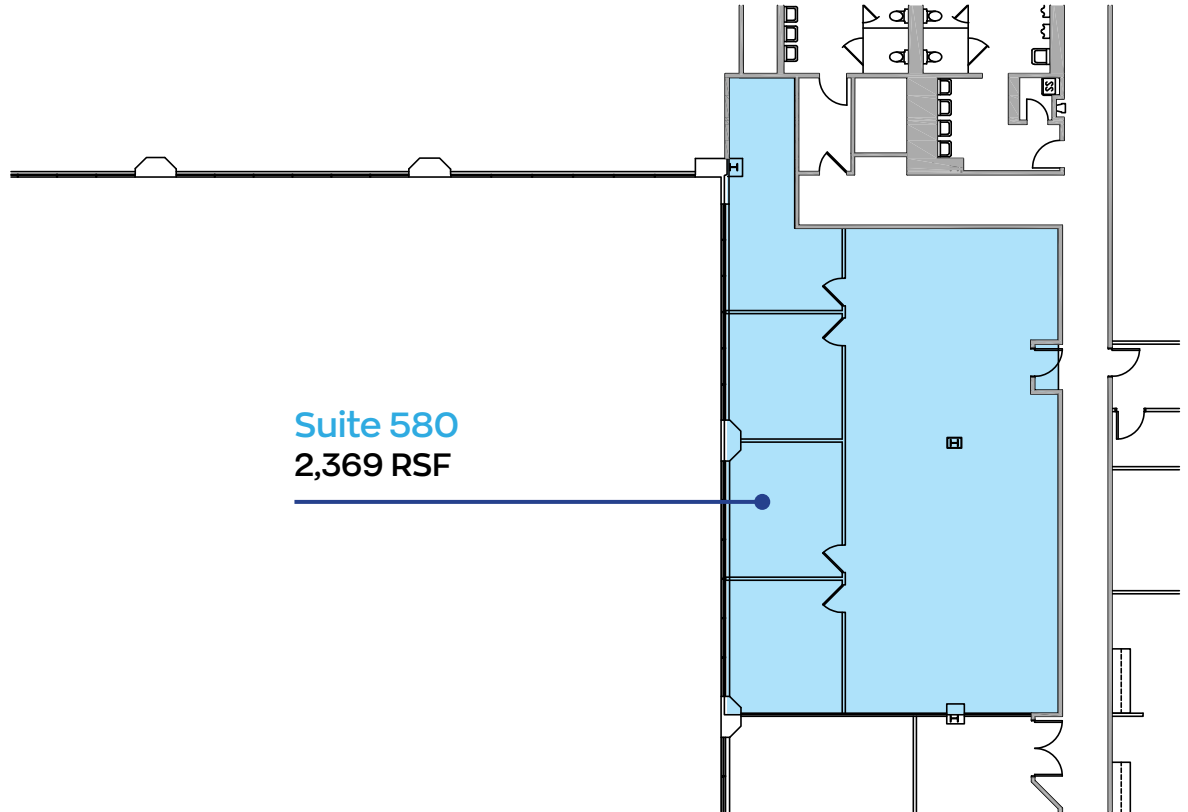




Location Key



Suite 580
2,369 RSF



Rick Widerman
+1 856 324 5301
rick.widerman@jll.com

Dan Close
+1 856 324 5306
dan.close@jll.com

Jones Lang LaSalle Americas, Inc.
220 Lake Drive East, Suite 102
Cherry Hill, NJ 08002

